

A photograph of a forest with tall, thin trees. Sunlight is streaming through the canopy, creating a warm, golden glow and long shadows on the forest floor. The text is overlaid on this image.

# ROSS FIELD PROJECT

By: Miriam, Johanna, Skylar & Elijah

# Introduction

- We are apart of the Teen Urban Tree Corp (TUTC) which is aprt of Speak for the Trees (SFTT)
- We advocate for trees because...
  - tons of trash and waste
  - low diversity of the trees in the area.

## Goals:

- Explain the benefits to having more trees and a higher diversity of trees at Ross Field.
- Introduce a plan to make sure that the trees that are already at Ross Field are maintained properly.

# Ross Field: Origin/Background

Ross Field is a field located in Hyde Park

It is was originally used as a baseball field , which has been around since 2002

Additionally, Ross Field was an extremely popular place for many baseball leagues

This site is used for: walking, running, baseball, tennis, basketball, and many more recreational activities.

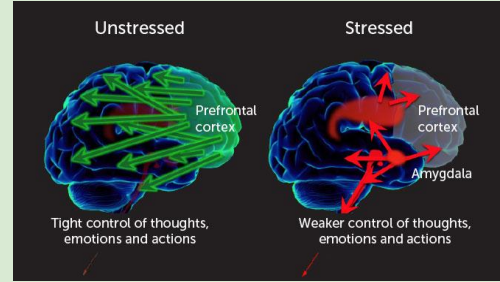
There wasn't always a playground in Ross Field, but there was one recently added a couple years ago





# The trees in Ross Field are important because...

- Trees help with reducing stress
- Lowers blood pressure
- Improve people mood
- Controls levels of asthma
- Help to produce shade, and lowers heat index in cities
- Provides fresh air/lowers CO2 levels



Ross Field and Hyde park have trees, but the city is not taking care of the trees that currently reside in the surrounding neighborhoods. The trees are not properly pruned, and are overall in poor condition.

# What is a Tree Inventory?

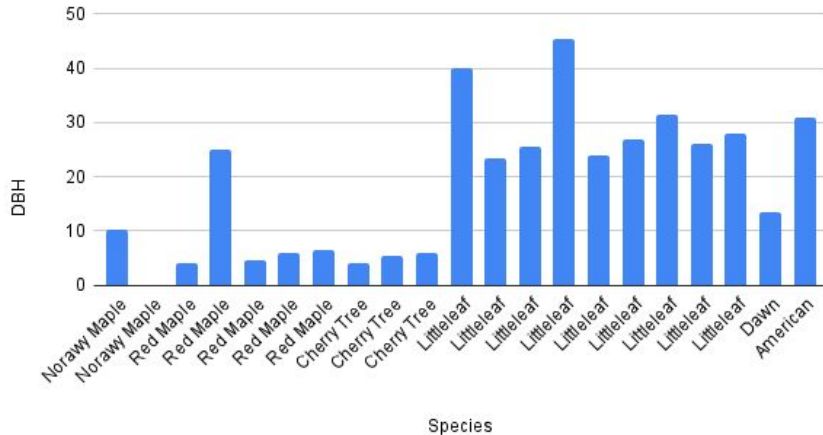
- A tree inventory is the gathering of data on tree diversity and health in a community forest.
- This data is usually inputted into a map
- The trees are color coded on the map to show the condition of the tree.



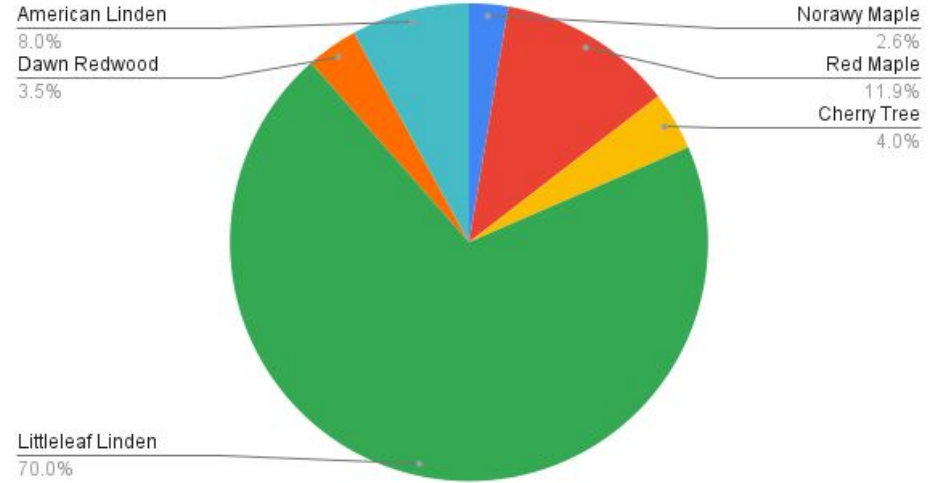
# Tree inventory

- DBH(diameter at breast height) of a tree measures the diameter of that tree.
- This measurement is taken about 3m(4.5 ft) from the base of the tree. The DBH can help to determine many things including carbon storage of trees.

DBH vs. Tree Species



Tree Diversity In Ross Field



- Inventoried 21 trees
- Range: 4-45.4 DBH
- Median: 24 DBH

# Pictures of Trees In Ross Field



Littleleaf linden



Red Maple

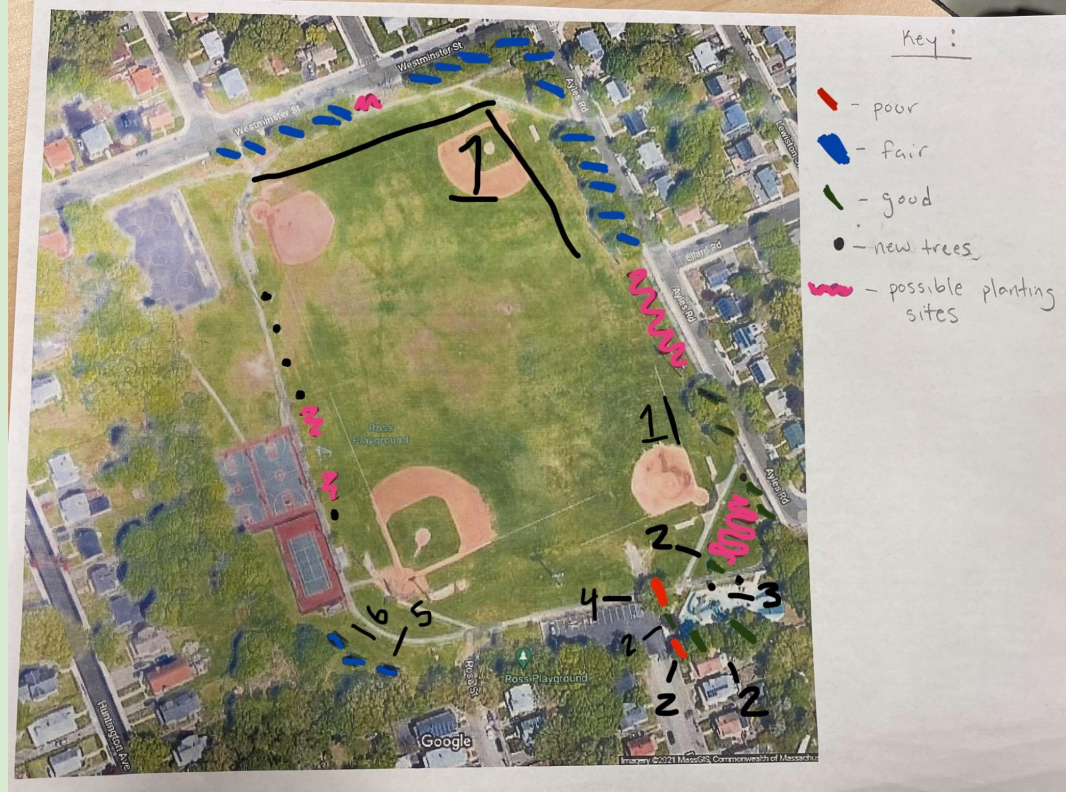


Cherry Tree



# Tree Inventory(continued)

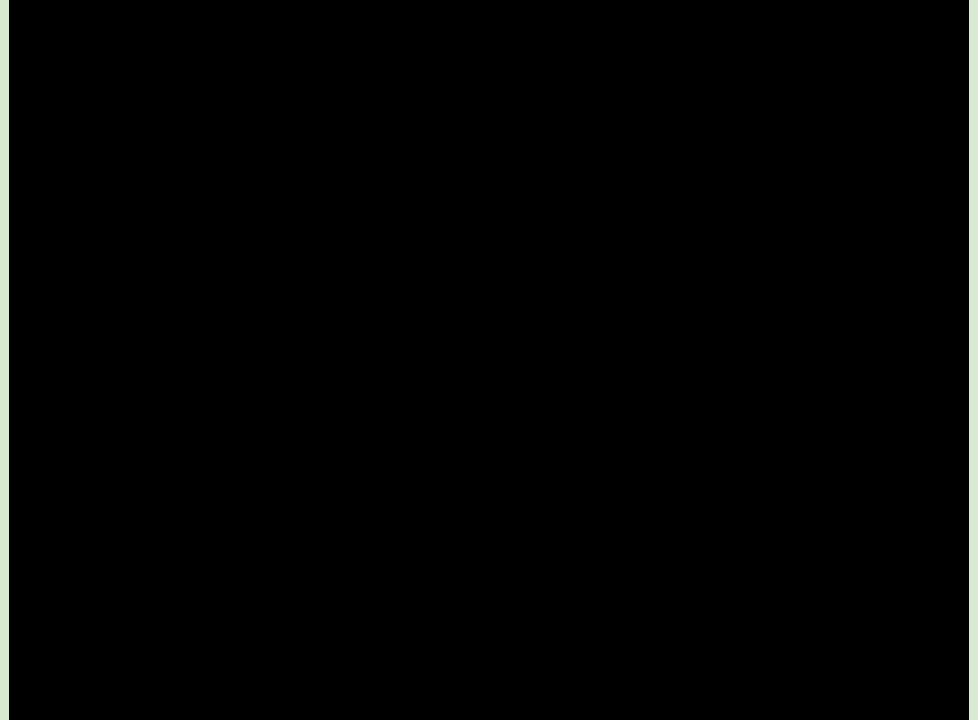
- 1 = Littleleaf Linden
- 2 = Red Maple
- 3 = Cherry Tree
- 4 = American Linden
- 5 = Norway Maple
- 6 = Dawn Redwood





# Observations of Tree Inventory

- Low tree diversity
- Many trees are in fair condition and in a need of pruning
- Positioned on the outside of the field
- New trees have been planted



# Event Plan

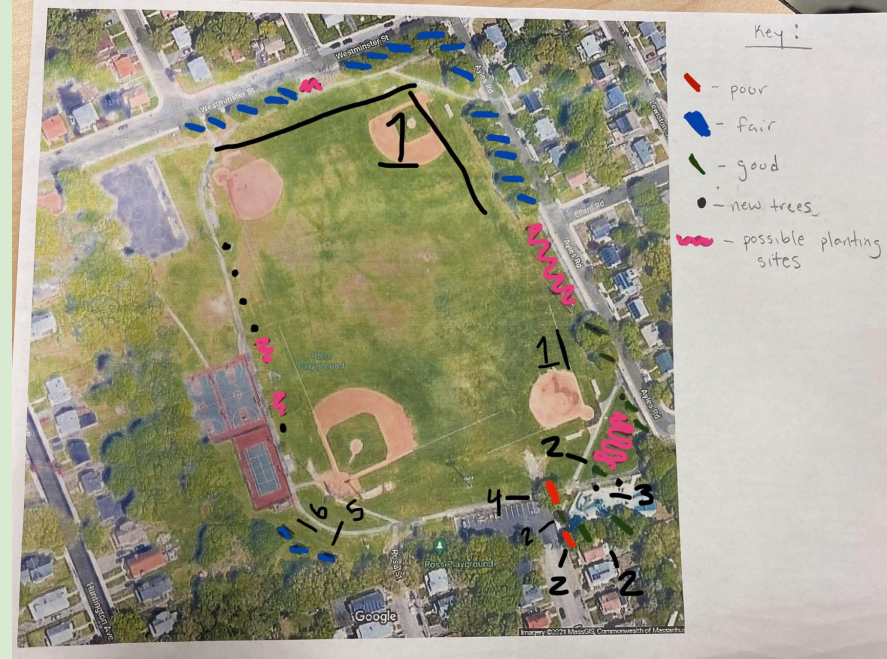
Before the event we would advertise the event through a social media account and flyers

- Event will take place in the Fall.
- Bring professional pruners to teach residents how to prune.
- Discuss the importance of trees
- Have tools(hand pruners, Weed wrenches,Topping shears, Shovel,ect. )
- Max Ford-Diamond would give us permission, and help with removing the trash bags after the event.
- Donations for food and drinks.
- Have a garbage disposal system in place to get rid of the branches/leaves(Truck, and garbage bags).
- During the event people will also be picking up trash.



# Planting Plan

- As a follow up to our event in the fall, we plan to have a similar event in the spring. Instead of learning how to prune trees and cleaning up trash, we plan to plant trees.
  - We have found that there are many potential planting spots in Ross Field.
  - The spring and fall are the optimal time for planting trees.
  - Residents will be invited to Ross Field to help plant trees.
  - Tools needed: shovels, spades, gloves, rakes.





# Proposed Trees To Be Planted

## Pin Oak

- Tolerates rough conditions
- Offers shade
- Beautiful fall color
- Easy to Transport

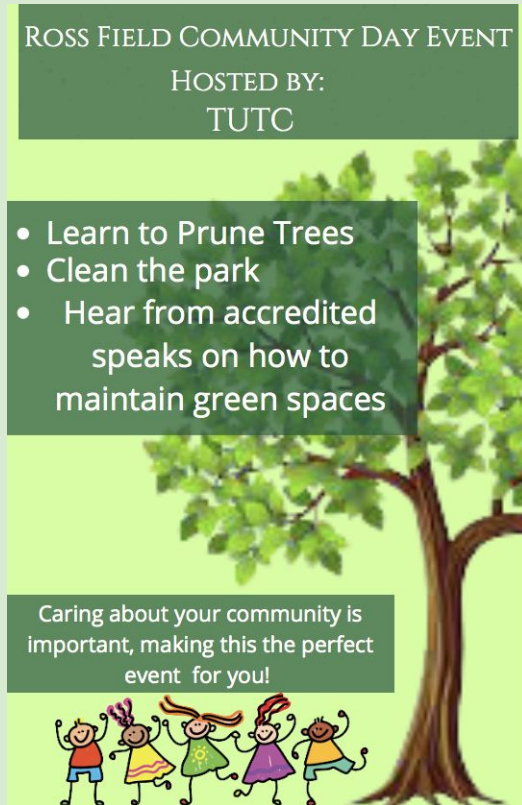


## Crabapple

- Disease resistant
- Offers shade
- A pollinator(attracts bees and in turn, helps to pollinate the whole park )



# Concept Art for Flyer



## Overview:

- Our goal in creating this flyer was to promote a proposed community event that would be held in Ross Field.
- We highlighted the main aspects of what the event would be in white.
- These flyers would be hung in and around Ross Field for people to see.

# Budget

Pt.1 of Event			
Things Needed	Cost	Total	
Arborists to Train People(2)	\$70.00 per hour	\$700	
Flyers(8x5) (50)	\$20	\$20	
Staples(5,000)	\$6.79	\$6.79	
Stapler (1)	\$12.91	\$12.91	
Loppers(3)	free	0	
Hand Prunes(3)	free	0	
Hand Saws(3)	\$15.97	\$47.91	
Chainsaws	free	0	
Gloves	free	0	
Bags for Branches(60)	\$32.04	\$32.04	
Truck to Take Branches Away(2 hours)	\$19	\$38	
Water Bottles(70)	\$8.99	\$8.99	
Snacks(donations)	free	0	
Water Truck	\$857	857	
		Total= \$1,724	

Overall Total: \$7,812.91

Pt.2 of Event		
Things Needed	Cost	Total
Trees(3-4)(Pin Oak 2)	\$53.99	\$107.98
Crabapple(2)	\$19.99	\$39.98
Sovels	free	0
Water Bucket(3-4)	23.49	\$93.96
Arborists(2)	\$70.00 per hour	\$700
		Total= \$941.91
Grand Total= \$2,665.91 (for event)		

Long Term Maitnence Plan							
Things Needed	Cost	Total					
Watering		\$64					Crabapple= \$,2083
Pruning(2-3 years)(4)	Crabapple(2) Pin Oak(2)	Total= \$5083					Pin Oak= 3,000
						\$1.50 = 1,000 gal	
						1 inch = 623 gal	
						52 weeks	



# Long Term Maintenance Plan

- Have the City of Boston maintain newly planted and existing trees(ideally)
- Maintenance entails watering and pruning
- Trees need to be pruned every (2-3 years)
- Newly planted trees need to be watered more frequently(every day for about 1-2 weeks)
- If possible have volunteers to help water trees

# Thank You For Listening!

