

Mattapan Tree Planting Project



Kerly, Mya, Theo, Taylor



Our Vision

Mattapan History

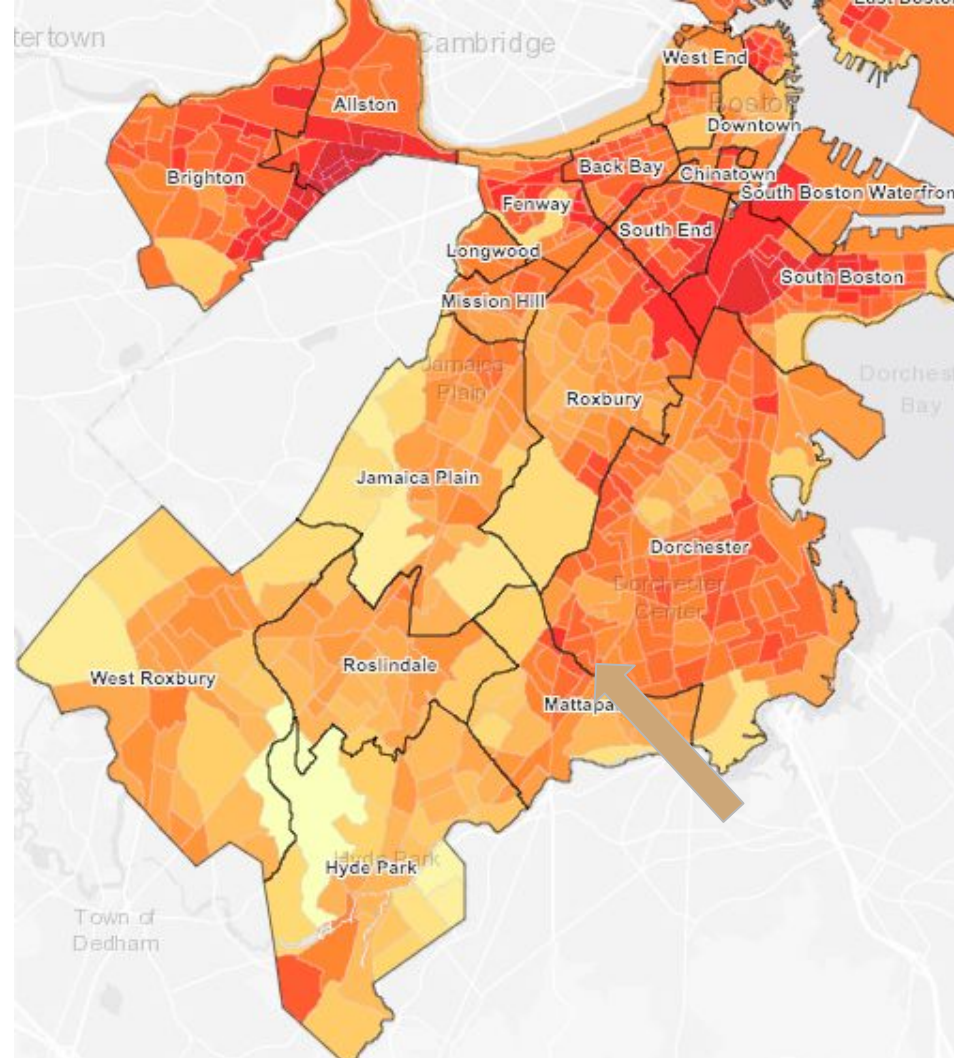
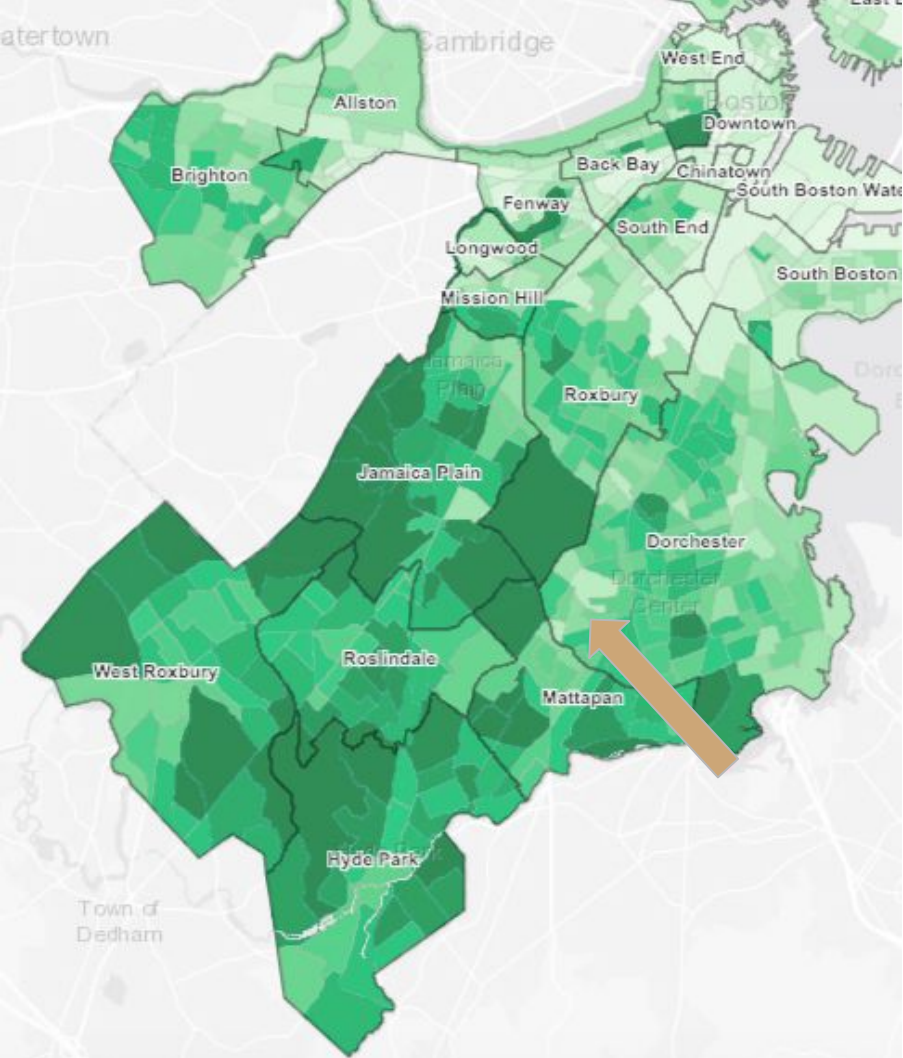
The Name comes from the Neponset Native American Phrase meaning “a good place to be”

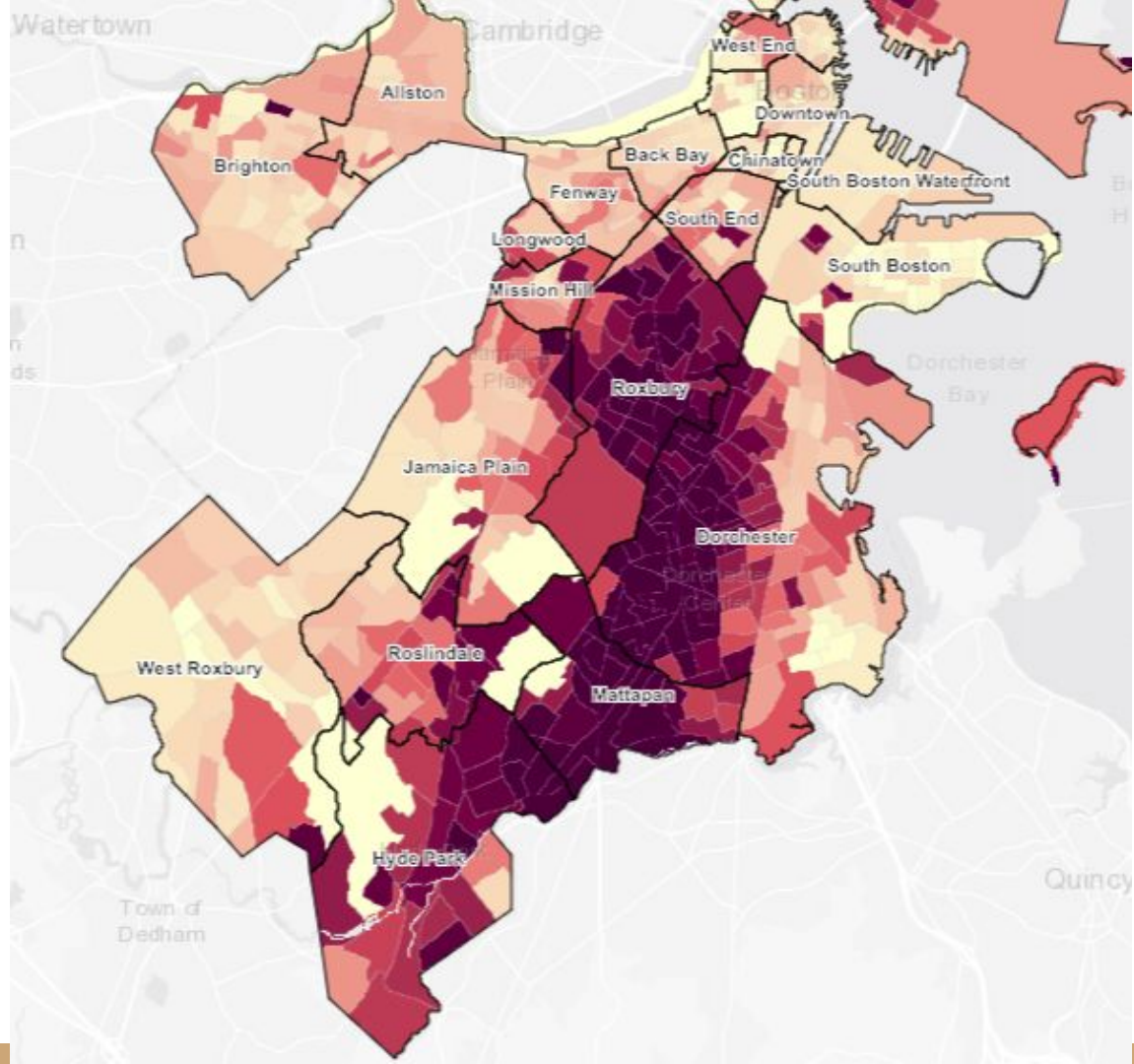
Mattapan began as a part of Dorchester in 1630, but was later separated to become its own neighborhood in 1870. By 1960, Mattapan had a population of 44,000 residents, 99% of them being white. However many white people in the area moved out of Mattapan to live in the suburbs. Today, Mattapan is 77% black.

Our site in Mattapan used to be a 3 story apartment, but was taken down, leaving a lot where our park will be.

Data About Our Site

- 26% tree canopy
- Mean temperature of neighborhood surround Wildwood Street: 82 degrees fahrenheit
- Neighborhood population is 97% minority





Personal Component

Why we chose this site:

- This site is an open space that is mostly grassland and has trees growing along one fence.
- Sometimes people in the community who have dogs bring their dogs there.
- Mattapan can get really hot during the summer and there aren't enough trees to give shade for pedestrians.
- This site is on the peak of a slight hill and could be a great place for people to relax if they walk by.

Neighborhood Tree Inventory

The existing trees in the area:

Seedless Honey Locust (1): Not much space to grow, 2 trunks, no damage, crown not full or dead, but there are dead branches.

Norway Maple (6): There are about 4 fully grown maple trees and 2 newly planted. This tree is in good condition and since this plant is a weed tree, they are able to grow in mostly any environment.

Buckthorn (1): Poor condition, multiple trunk leaders wrapping around each other but has a full crown.

Eastern Cottonwood (2): Fair condition, can see roots and there is enough space. However, there is damage to the trunk and dead branches.



Risk Assessment

- Lifted sidewalks- People can trip
- Slanted trees- Trees can fall over
- Dead branches- They might fall which can hurt someone if they are standing under it
- Multiple hosts- Tree is more likely to fall over because it's less stable





Species Selection



Tree Species

1. American Sweet Gum: Grows at medium to fast rate, grows to 50-70 ft, has shade & lives for more than 150 yrs & has no cons
2. Pin Oak: It's tall, grows quick, shaded tree & easy to transplant. Cons: High maintenance, needs to be pruned often.
3. Kwanzan Cherry: It has stunning pink blossoms, good fall color, planted in containers, along walks & streets & has lifespan of 15- 25 yrs. No cons
4. Emerald Arborvitae: Shimmering emerald green foliage with a classic narrow, pyramidal form attractive in all seasons. Keeps its lustrous color even in the cold winter months. Releases a pleasing aroma when leaves are squeezed.
5. Japanese Maple: Mature height of 15-25 feet, good for squirrels, chipmunks, quail, songbirds, visually beautiful to attract visitors to the space.

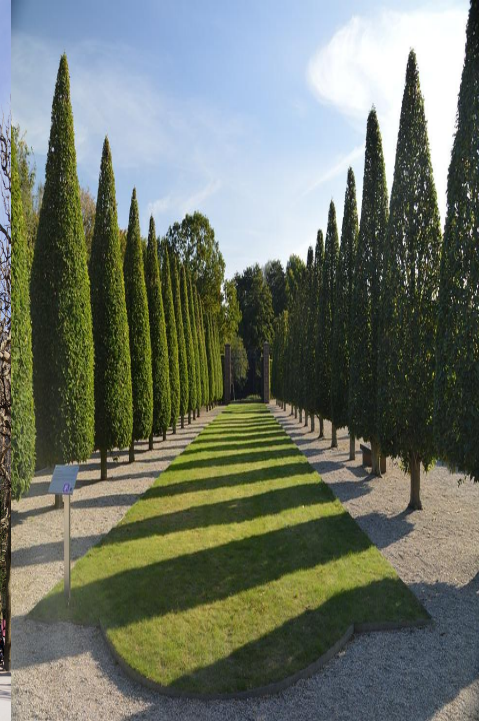
Images Of Tree Species

American Sweetgum

Pin Oak

Kwanzan Cherry

Emerald Arborvitae



Japanese Maple Tree



Planting Plan

- Cut down other trees in the fall and plant the new trees in early April (spring).
- We will be using stakes, chicken wire, shovels, soil testers, water buckets, pruners and water bags
- Hire people (\$13.50/hr, 8 hours total, 3 people->324\$) or volunteers (email whoever is in charge or schools, neighbors, leaflets)
- We would also attempt to involve the City of Boston
- Cost: 429.90\$

Our Maintenance Plan

How We Maintain Trees: Pruning branches, adding soil and mulch to the tree planting spot, watering trees, cleaning up trash in the area

Who will help Maintain Trees: high school students who need community service hours, volunteers from the Boston area, neighbors of the site

Poison Ivy and Invasive Species Maintenance: Pruning tools, gloves, trash bags, trash sticks, saw, poison ivy removal



Community outreach:

School- We can ask the principal to speak on it to help spread the word

Put up flyers- Putting up flyers around our neighborhood so that people can know about our project

Instagram post- Many kids use social media so it may be more effective to use what they use to communicate with



Budget

1. Procurement

5 trees:\$67.95

Flowers:\$478.7

Shrubs:\$169.78

Chicken Wire:\$12.99

Soil/Mulch:\$36.18

Water:\$12.19

4 Benches:\$1959.96

Stakes:\$15.68.

Total:\$2753.43

2. Planting

Hire Peps:\$324

Shovel:\$30

Soil Test:\$25.9

Total:\$429.9

3. Outreach

Paper:\$20

Total:20

Total Cost:\$3869.488

Amount Left:\$6130.512

4. Care[2+yrs]

Gloves:\$13

Trash Bags:\$12

Water Bags 4:\$153.34

Poison Ivy Removal:\$50

Total:\$228.34

Budget Pie Chart

Budget Pie Chart

Care (2+ years)

0.6%

Outreach

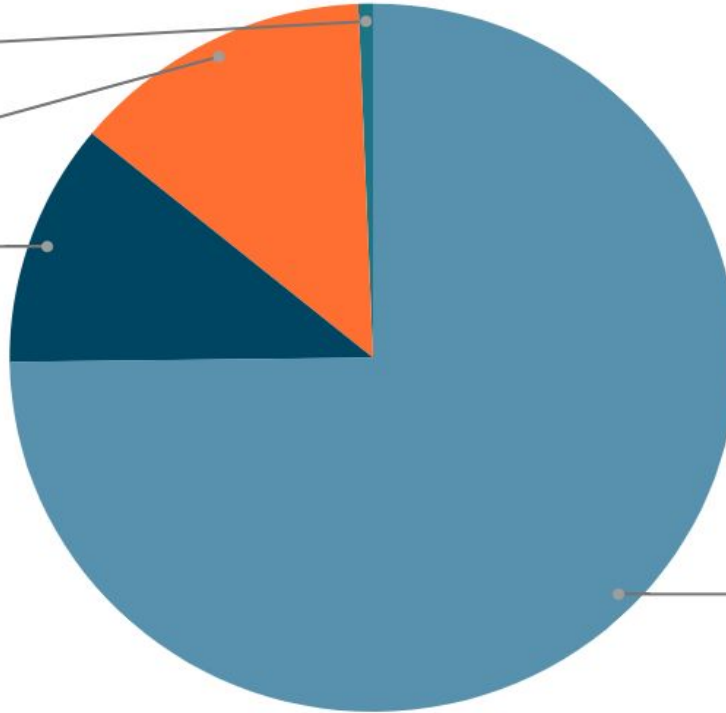
13.4%

Planting

11.1%

Procurement

74.8%



Thank you!