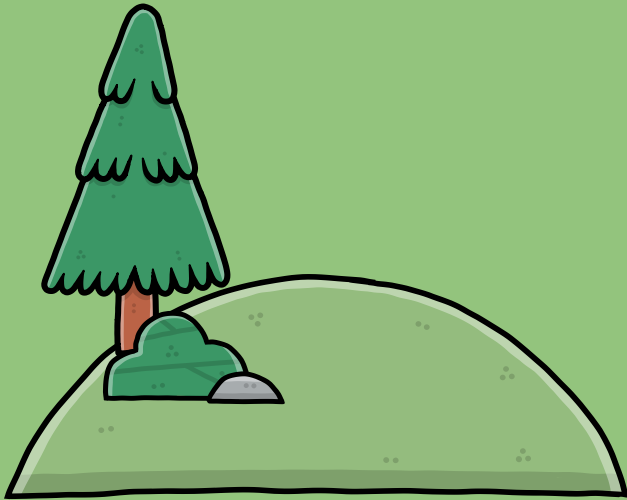


Parts of a Tree

What is an Urban Forest?



Urban Forest = A forest, or collection of trees, that grow in a city.

Includes:

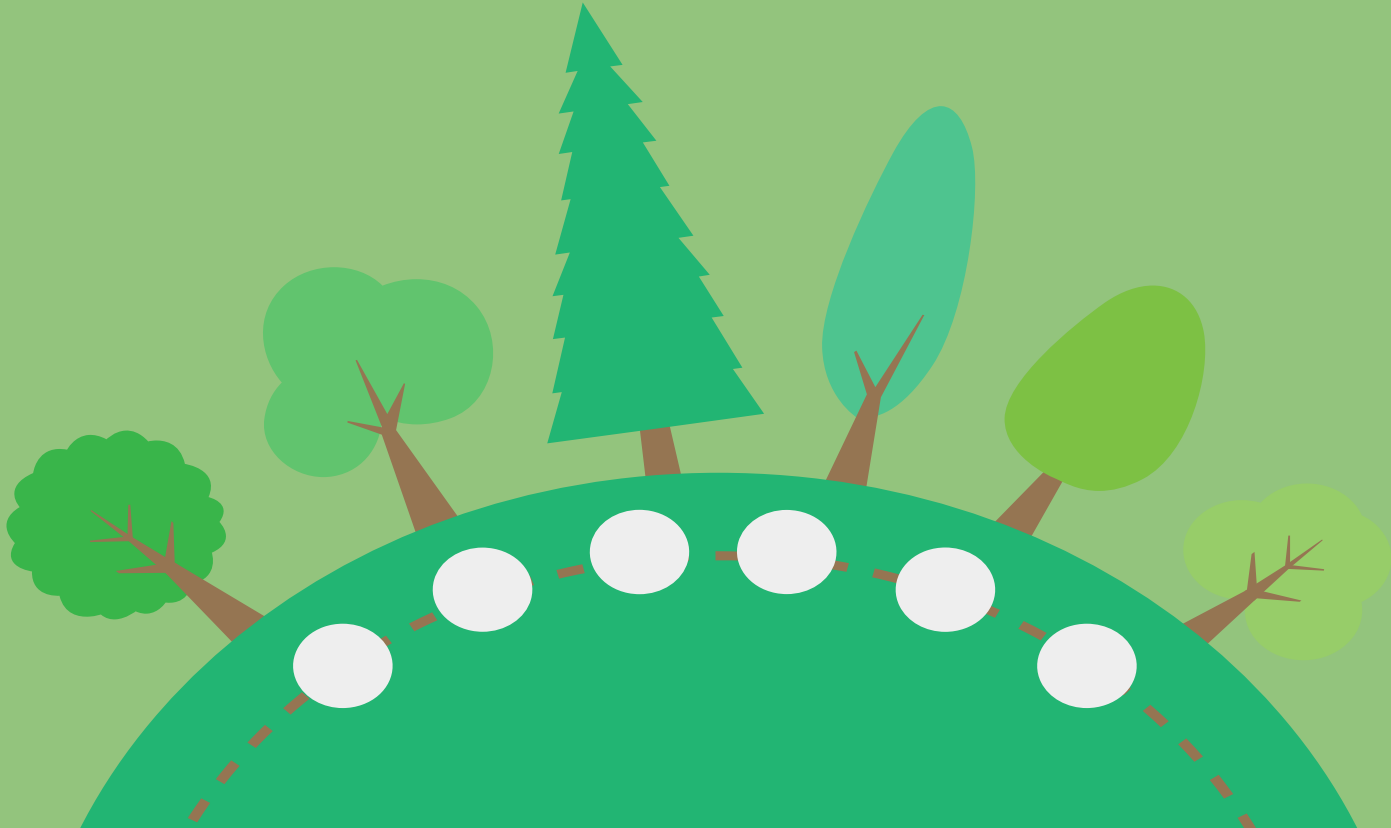
- Parks
- Streets
- Private Property



What is Tree Blindness?

Refers to people who live in cities with green spaces and trees, yet still are not recognizing those spaces and trees around them.

Why are Trees So Important?





COOLS THE AIR



**REGULATES WATER FLOW
AND IMPROVES WATER QUALITY**



**FILTERS FOR URBAN
POLLUTANTS**



**MITIGATE
CLIMATE CHANGE**



**IMPROVES PHYSICAL AND
MENTAL HEALTH**



**REDUCES AIR
CONDITIONING NEEDS**



**SAVES ENERGY USED
FOR HEATING**

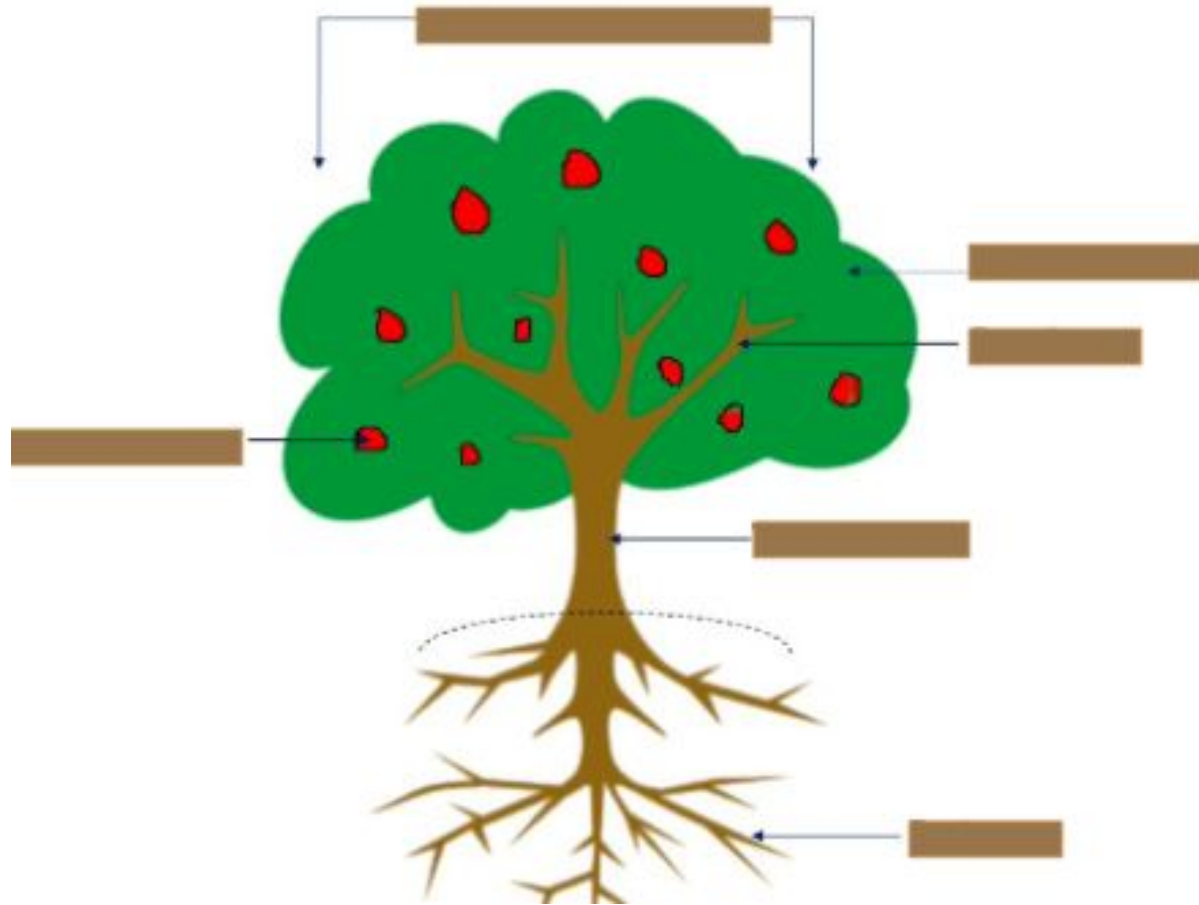


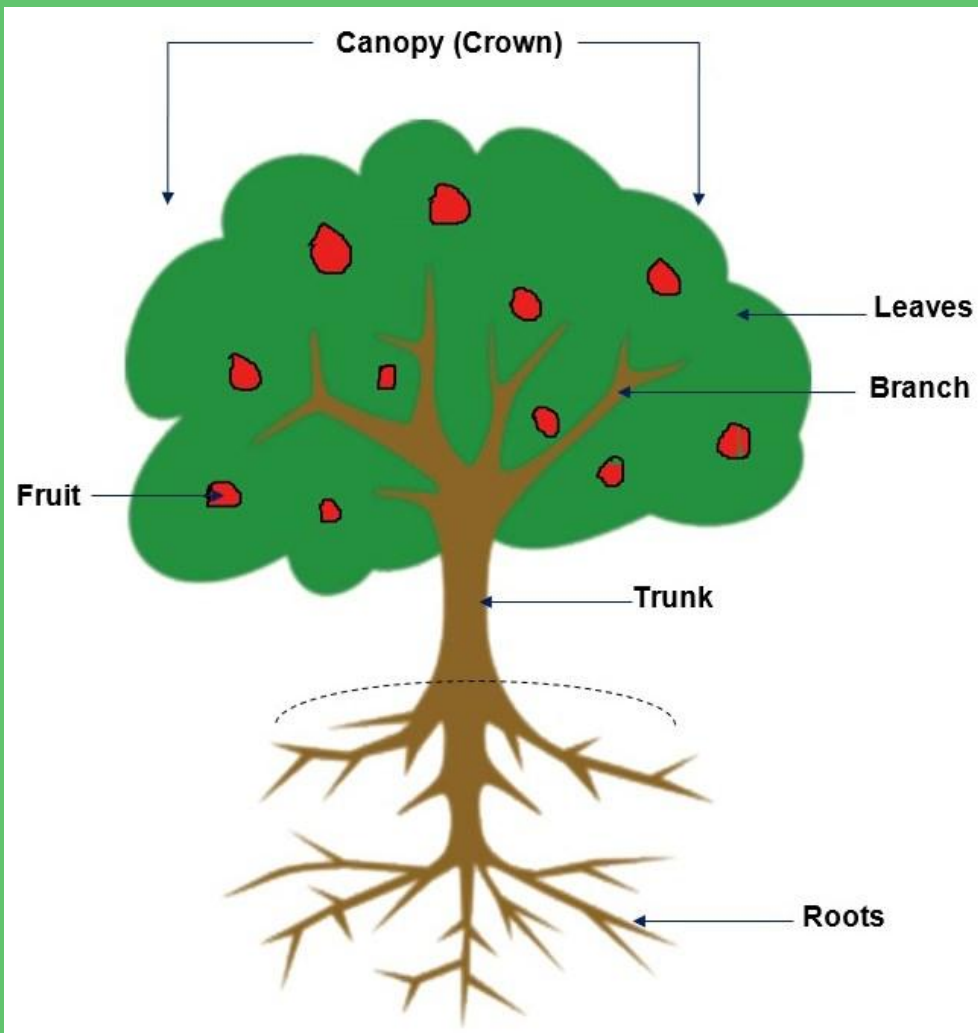
**INCREASES URBAN
BIODIVERSITY**



**INCREASES PROPERTY
VALUE**

Parts of a Tree





Tree Crown



Tree Crown

SPRING



SUMMER



FALL

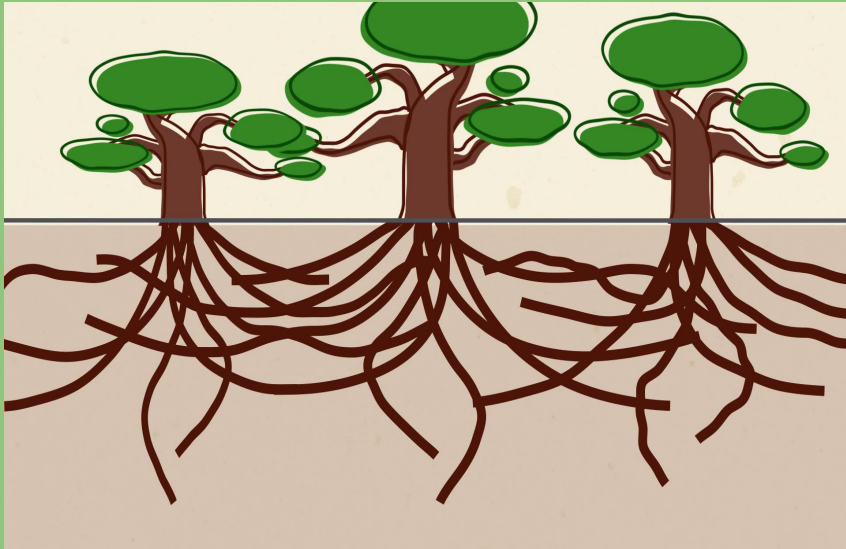


WINTER



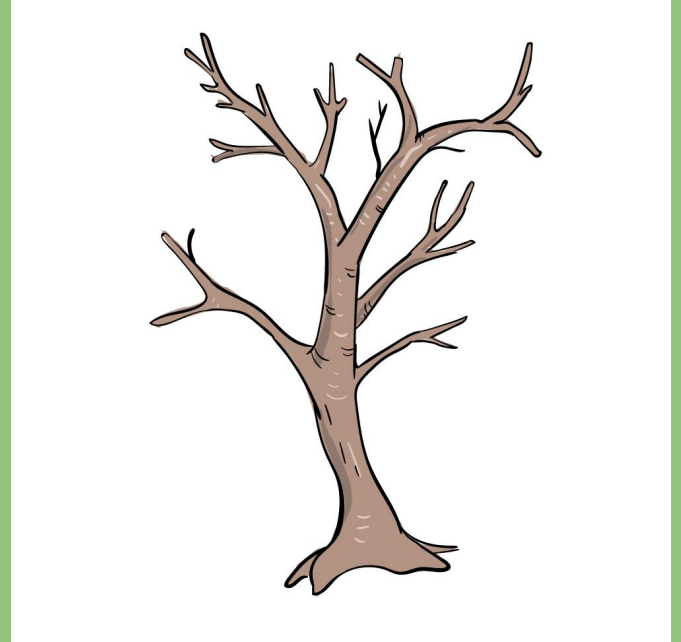
Roots

- What do roots do for the tree?
 - Provides nutrients and water
 - Helps trees survive in storms by keeping it grounded



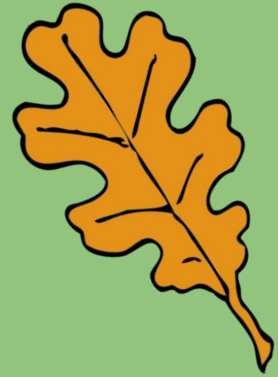
Branches

- What do branches do for the tree?
 - Supports leaves and fruits
 - Shares water and nutrients

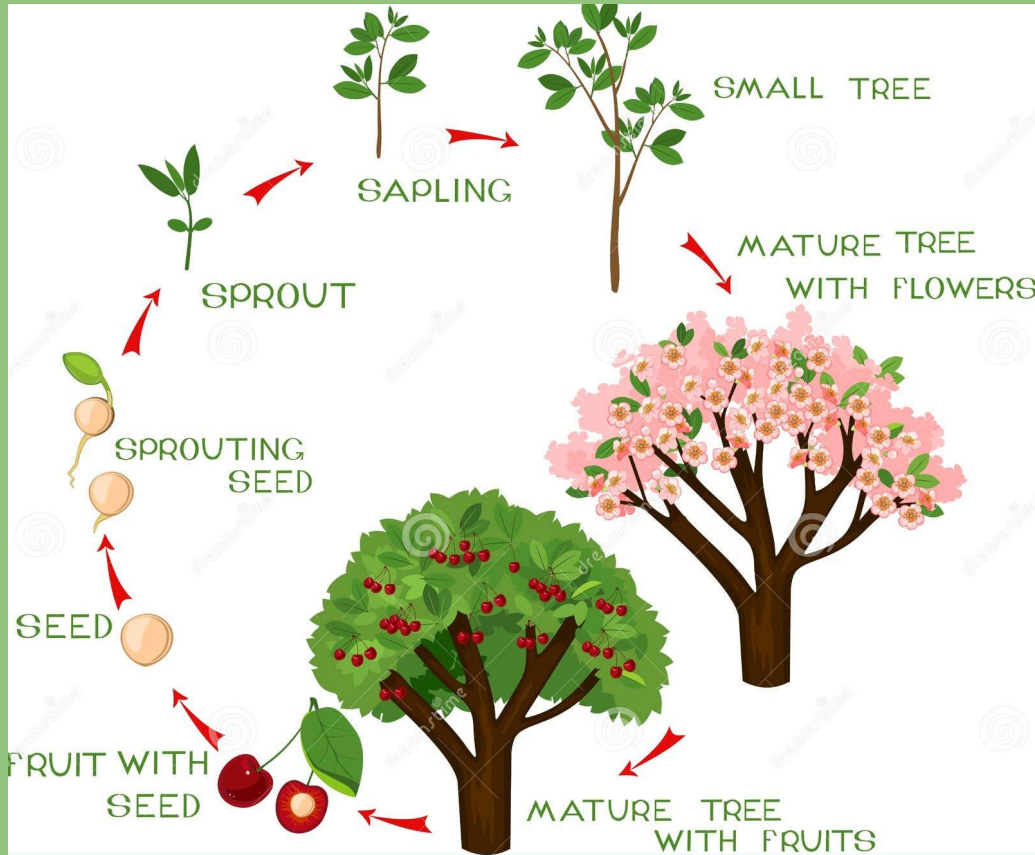


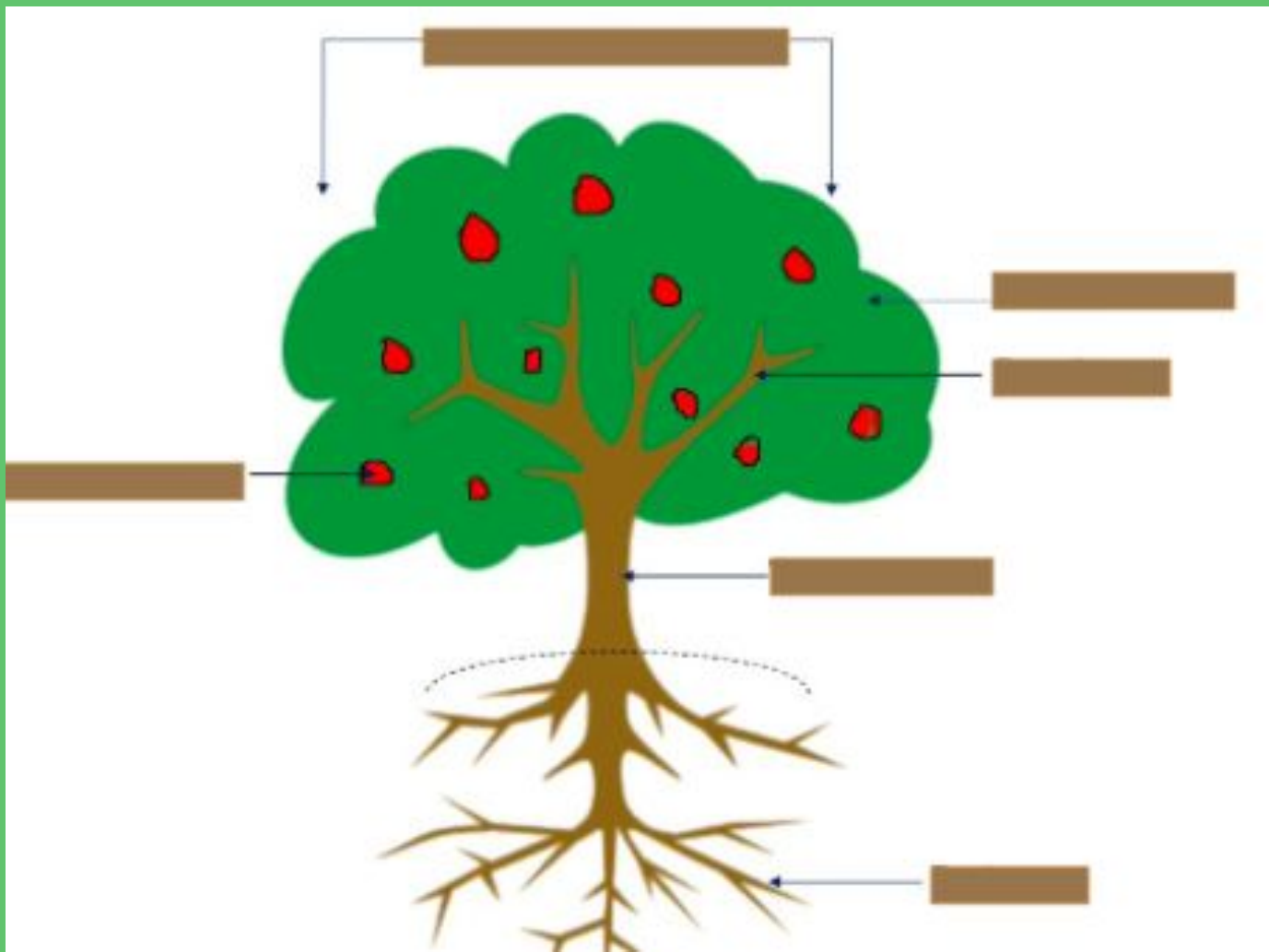
Leaves

- What do leaves do for the tree?
 - Provide food for the tree
 - Collect water
 - Clean the air
 - Makes oxygen
 - What tree is that?



Tree life cycle





Questions

- What is one part of a leaf you learned about today that you thought was really interesting
- Do you feel confident in identifying different leaves based on the characteristics we mentioned today?

Questions

- What did you write on your leaf?
- Can you tell me what season your leaf would be based on its color?